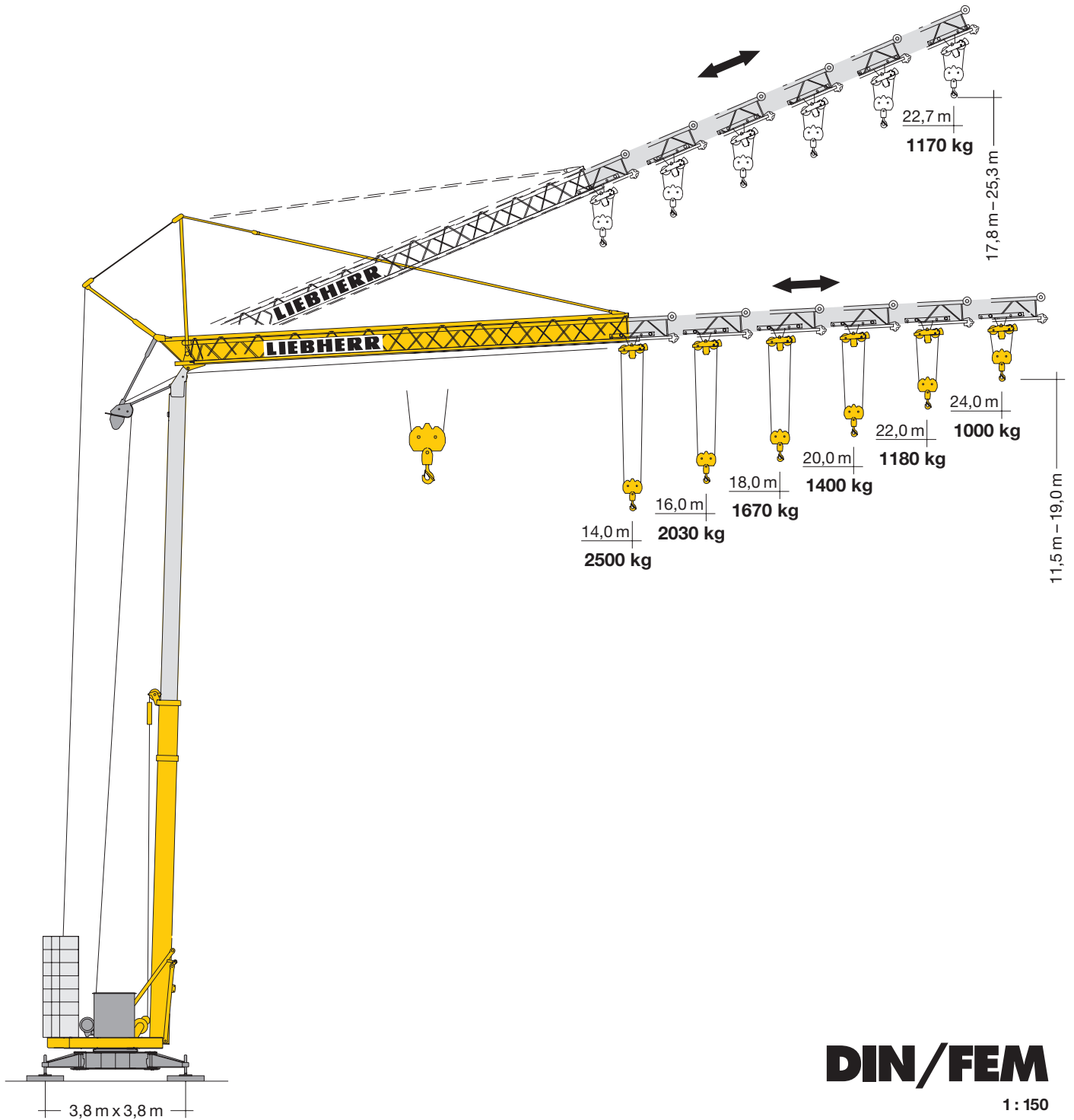


Turmdrehkran

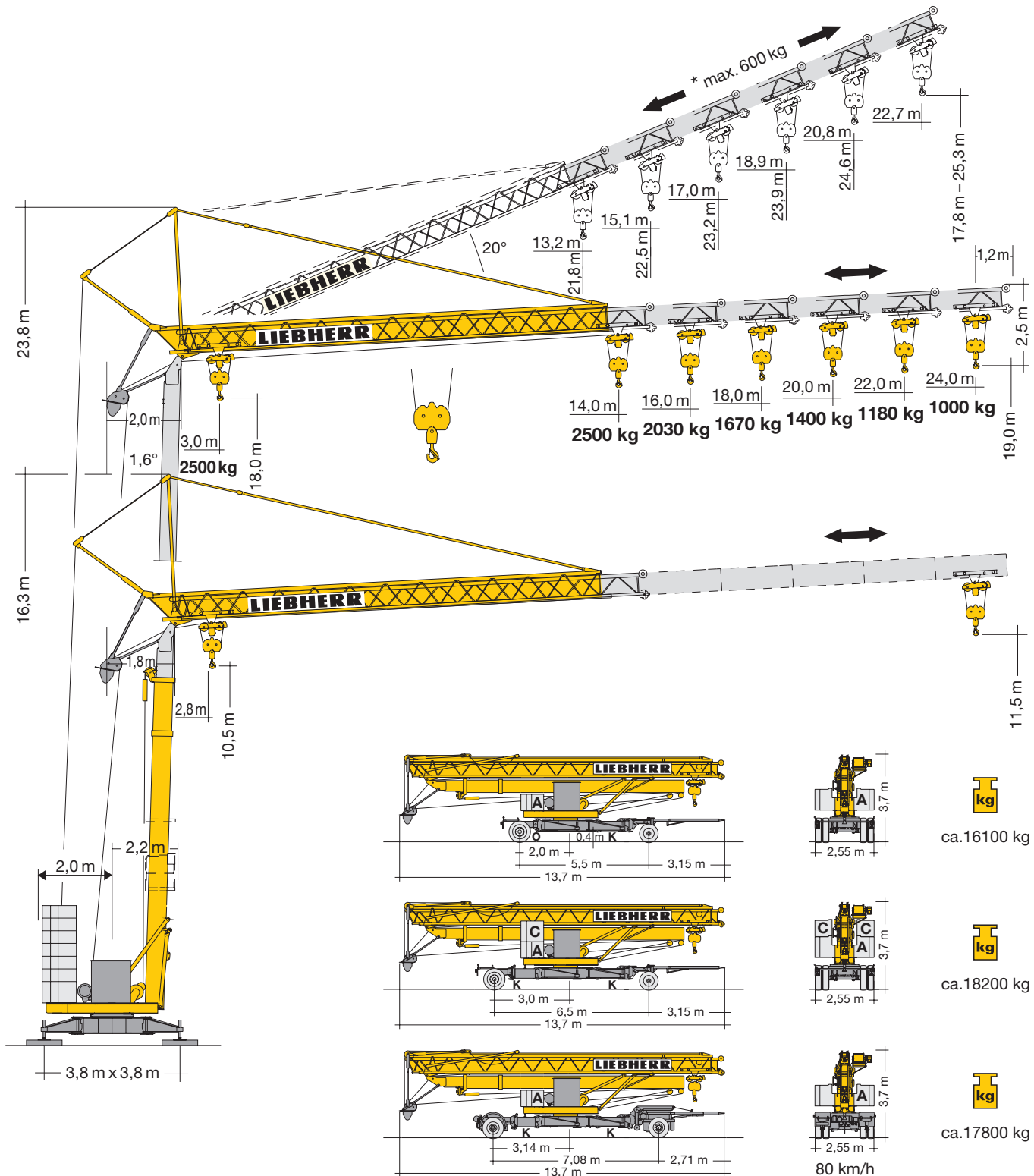
Tower Crane / Grue à tour / Gru a torre
Grúa torre / Guindaste de torre

24 TT

24 - 35 mt



LIEBHERR



Gewicht

Weight / Poids / Peso / Peso / Pesos

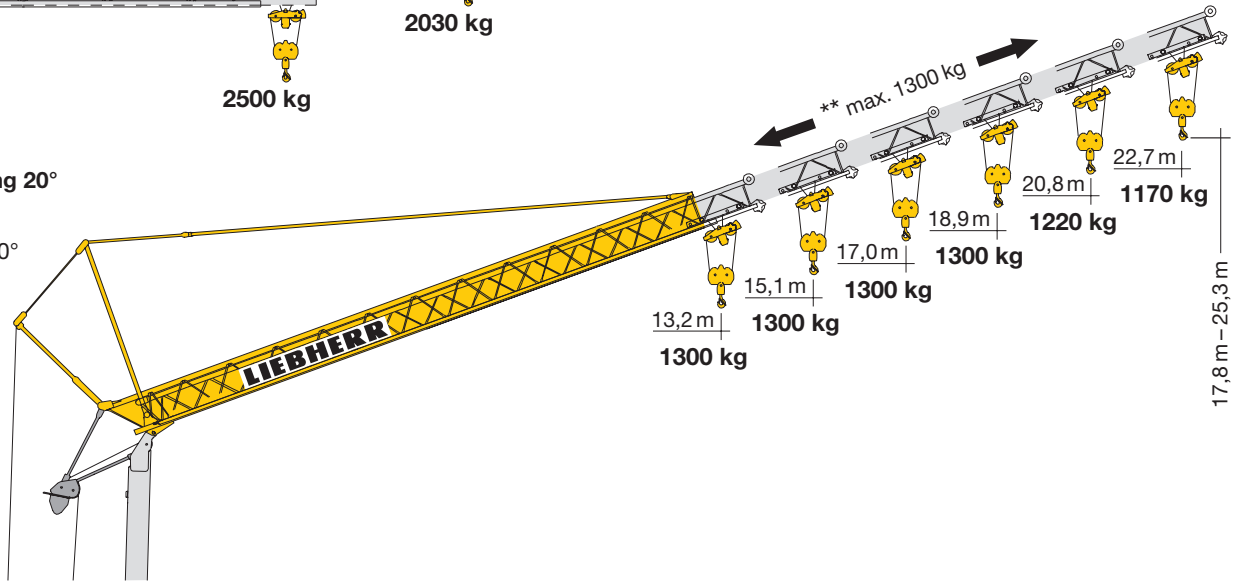
	<p>1 x A = 4000 kg 6 x B = 10000 kg</p>	<p>14000 kg</p>	<p>r = 2,0 m</p>		<p>ca. 9800 kg</p>
	<p>1 x A + 2 x C = 5660 kg 5 x B = 8340 kg</p>				

Ausladung und Tragfähigkeit

Radius and capacity / Portée et charge / Sbraccio e portata / Alcances y cargas / Alcance e capacidade de carga

m	m/kg	m/kg																						
		12,0	13,0	14,0	15,0	16,0	17,0	18,0	19,0	20,0	21,0	22,0	23,0	24,0										
24,0	3,0 – 12,3 2500	2310											2090	1900	1740	1600	1480	1380	1290	1200	1130	1060	1000	
22,0	3,0 – 12,7 2500	2410											2180	1980	1820	1670	1550	1440	1340	1260	1180	1000 kg		
20,0	3,0 – 13,0 2500	2500											2260	2060	1890	1740	1610	1500	1400	1180 kg				
18,0	3,0 – 13,3 2500	2500											2340	2130	1960	1800	1670	1400 kg						
16,0	3,0 – 13,7 2500	2500											2430	2210	2030	1670 kg								
14,0	3,0 – 14,0 2500	2500											2500	2030 kg			2500 kg							

Auslegersteilstellung 20°
 Elevated jib 20°
 Flèche inclinée 20°
 Braccio inclinato a 20°
 Pluma inclinada 20°
 Lança inclinada 20°



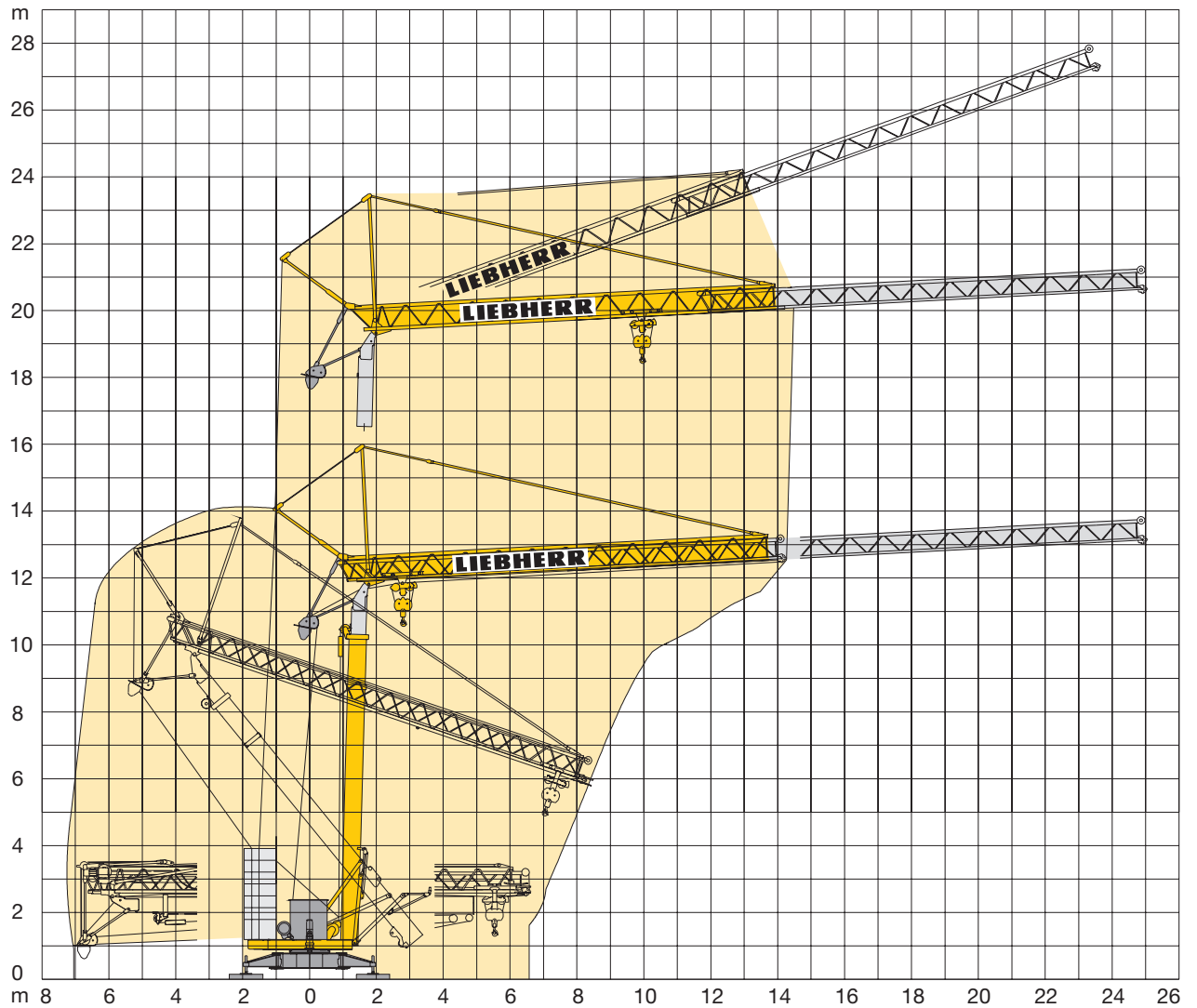
Antriebe

Driving units / Mécanismes d'entraînement / Azionamenti / Mecanismos / Mecanismos

	U/min. 0 ↔ 0,8 sl./min tr./min	1,5 kW EDC
	20,0 / 40,0 m/min	1,8 / 3,5 kW 20° 2,8 / 3,5 kW 20°**
	10,0 m/min	1,8 kW 2,8 kW 20°
	4,0 m/min	5,0 kW

	Stufe / Step / Cran Marcia / Velocidad Velocidade	kg	m/min
11,0 kW KL	1	2500	5,0
	2	2500	20,0
	3	1300	40,0
11,0 kW FU	1	2500	4,0
	2	2500	20,0
	3	1300	38,0
	4	1000	50,0

	400 V	Hz	kVA
55,0 m	4 x 6 mm ² KL	50	20,0 KL
85,0 m	4 x 6 mm ² FU		18,0 FU



Kolli-Liste

Packing List / Liste de colisage / Lista dei colli / Lista de contenido / Lista de embalagem

Pos. Item Rep. Voce Pos. Ref.	Anz. Qty. Qte. Qta. Cant. Cant.		L (m)	B (m)	H (m)	kg	
1	1	Transportachse vorne Tra 100 KY 2 Road transport axle front / Essieux de transport avant / Asse di trasporto anteriore / Eje delantero para transporte / Eixo de transporte dianteiro		4,10	1,42	1,10	750
2	1	Transportachse hinten Tra 120 GY 1A Road transport axle behind / Essieux de transport arrière / Asse di trasporto posteriore / Eje trasero para transporte / Eixo de transporte traseiro		1,70	2,50	1,10	1100
3	1	Transportachse vorne Tra 115 Road transport axle front / Essieux de transport avant / Asse di trasporto anteriore / Eje delantero para transporte / Eixo de transporte dianteiro		4,10	2,50	1,32	1900
4	1	Transportachse hinten Tra 117 GY 1A Road transport axle behind / Essieux de transport arrière / Asse di trasporto posteriore / Eje trasero para transporte / Eixo de transporte traseiro		1,80	2,50	1,10	1500

Konstruktionsänderungen vorbehalten!

Subject to alterations! / Sous réserves de modifications!
 Si fa riserva di modifiche! / Salvo modificação da construoção!
 ¡Sujeto a modificaciones!

Sämtliche Angaben erfolgen ohne Gewähr. / This information is supplied without liability.

Ces renseignements sont sans garantie. / Le indicazioni contenute si intendono salvo errori ed omissioni.
 Declinamos toda responsabilidad derivada de la información proporcionada.
 Declinamos qualquer responsabilidade quanto à informação fornecida.

120 P – 4298 H1 B3 DIN 15018 • BGL C.0.08.0022 / FEM (Section 1) Krangruppe A3 und OENORM T3 • 01.02 / 6

Printed in Germany.