

**Tower Crane  
Grue à tour**

# Turmdrehkran 40 K

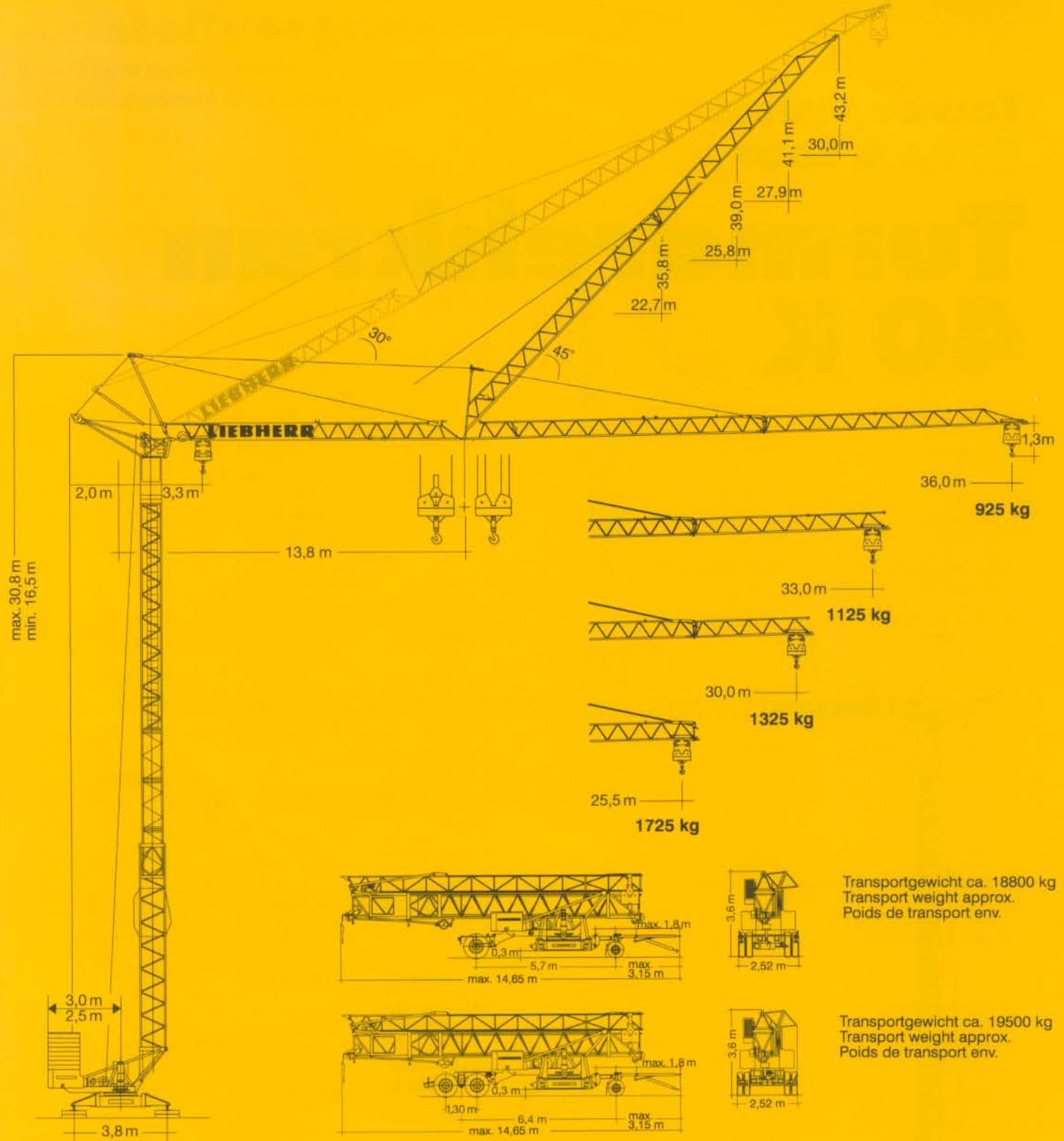


11,7 m - 20,0 m - 22,0 m - 24,0 m - 26,0 m  
 schienenfahbar / rail-going / mobile  
 stationär / stationary / stationnaire

**DIN/FEM**

Maßstab 1 : 236  
 scale / échelle

# LIEBHERR



# Gewicht

## Weight

### Poids

Zentralballast Central ballast weight Lest de base		1400 kg	Konstruktionsgewicht ca. Dead weight approx. Poids de la construction env.	10360 kg (bei max. HH 26 m: + 900 kg)
Gegengewicht Counterweight Contrepoids	r = 3,0 m r = 2,5 m	22440 kg 26360 kg		

# 40 K



# Aufstellvorgang

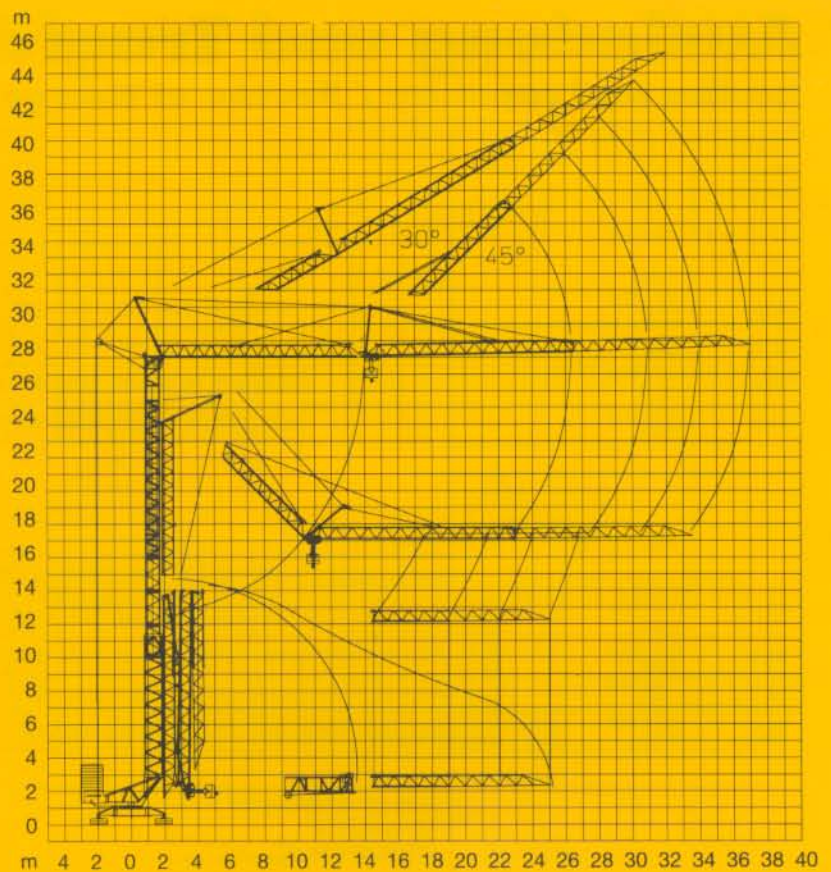
Erection procedure

Déroulement de montage

Ballasterausladung 5,0 m

Ballasting radius 5,0 m







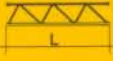




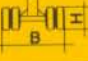




Portée pour dispositif de lestage 5,0 m



## Kolli-Liste

Packing List

Liste de colisage

Pos. Item Rep.	Anz. Qty Qté	Turmstück Tower section Élément de mât			L (m)	B (m)	H (m)	kg
1	3	Turmstück Tower section Élément de mât			2,10	0,85	0,88	350
2	1	Ausleger-Verlängerung 25,5 m – 30,0 m Jib extension Rallonge de la flèche			4,70	0,80	0,70	180
3	1	Ausleger-Verlängerung 30,0 m – 33,0 m Jib extension Rallonge de la flèche			3,10	0,80	0,70	110
4	1	Ausleger-Verlängerung 33,0 m – 36,0 m Jib extension Rallonge de la flèche			3,10	0,80	0,70	95
5	1	Transportachse vorne Tra 100 KY 1 Road transport axle front Essieux de transport avant			3,00	1,13	0,97	660
6	1	Transportachse hinten Tra 120 GY 1A Road transport axle behind Essieux de transport arrière			1,90	2,50	1,05	1150
7	1	Transportachse Tra 200 GZ 3 Road transport axle Essieux de transport			3,10	2,50	1,10	2600
8	1	Kiste mit Seilen und Kleinteilen Case with ropes and small parts Caisse avec câbles et pièces détachées			1,00	0,80	1,00	450

Datenblatt Nr. 120 P – 3451 H1 B3 DIN 15018 • BGL 2108-0040 /  
FEM (Section 1) Krangruppe A3 und OENORM T3 • 04.95

Data sheet

Feuille de caractéristiques

Konstruktionsänderungen vorbehalten!  
Subject to alterations!  
Sous réserves de modifications!

Printed in Germany.

Nehmen Sie Kontakt auf mit

Please contact

Mettez-vous en rapport avec

**LIEBHERR-WERK BIBERACH GMBH, Postfach 1663, D-88396 Biberach an der Riß**

☎ (0 73 51) 41-0, Fax (0 73 51) 4 12 25