

# Turmdrehkran

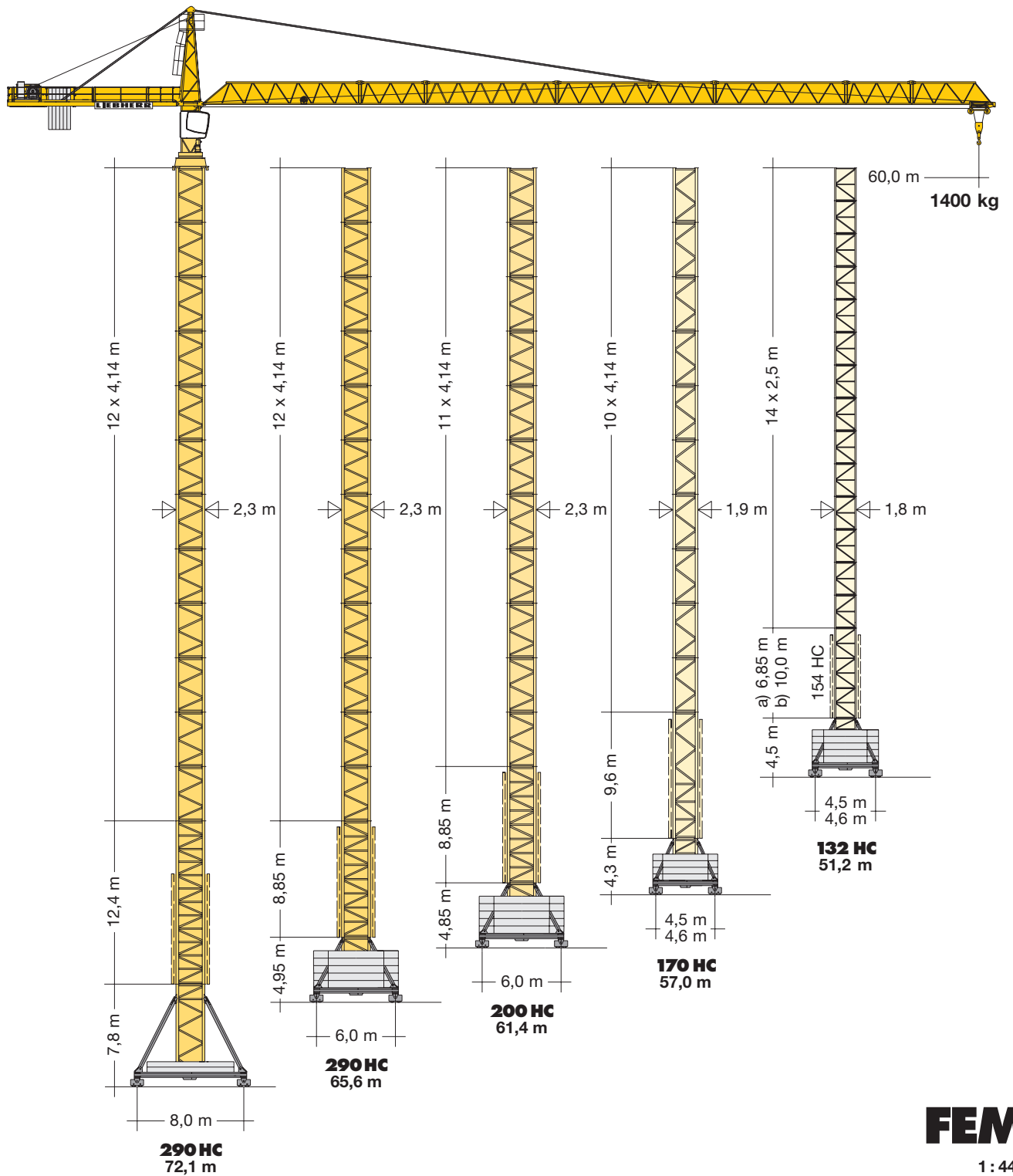
Tower Crane / Grue à tour / Gru a torre  
Grúa torre / Guindaste de torre

## 154 EC-H 10 FR.tronic®

154 EC-H 6 FR.tronic®

154 EC-H 6 Litronic®

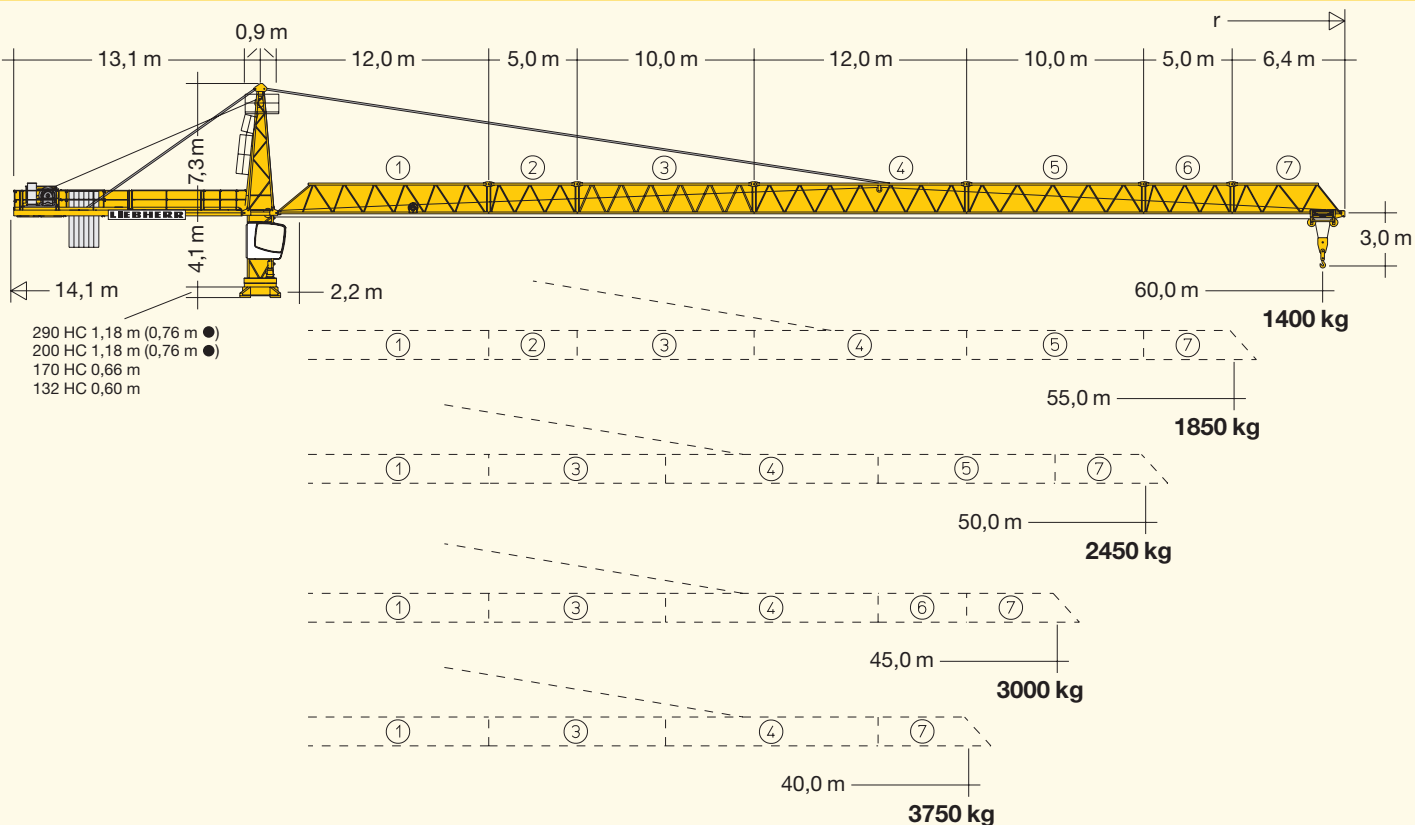
▶ 154 EC-H 10 FR.tronic®



**FEM**

1 : 440

# LIEBHERR



- 290 HC 1,18 m (0,76 m ●)
- 200 HC 1,18 m (0,76 m ●)
- 170 HC 0,66 m
- 132 HC 0,60 m

● = siehe Betriebsanleitung. / see instruction manual. / voir manuel d'instruction.  
vedasi le istruzioni sull'uso. / superiores según manual. / consultar manual de instruções.

## Hubhöhe

Hoisting height / Hauteur sous crochet / Altezza di sollevamento / Altura bajo gancho / Altura de montagem

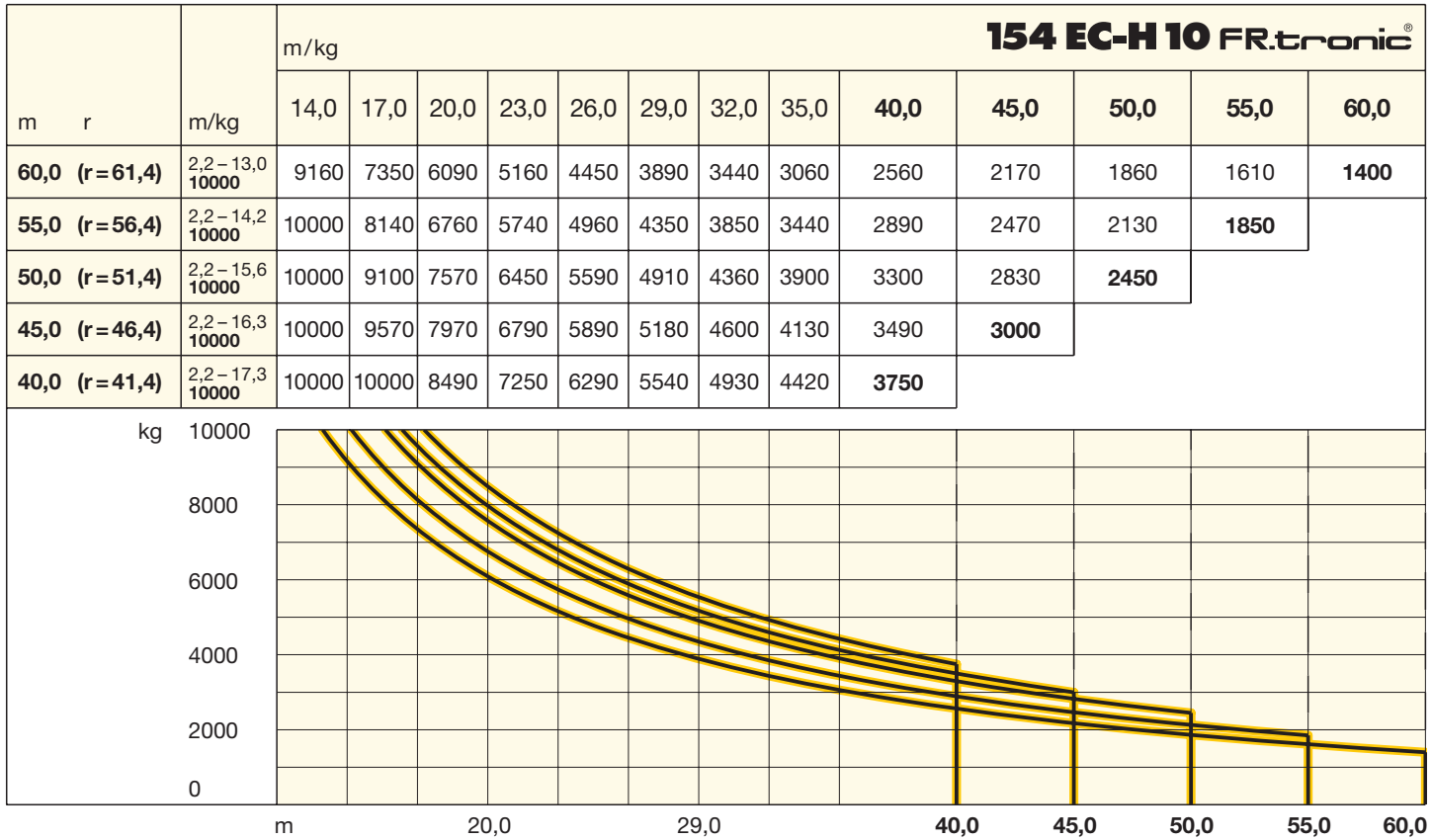
### 132 HC

15	-	-	-	-	-	-	46,3*	49,5*	-	-	-	-
14	48,0*	51,2*	47,5*	50,7*	-	-	43,8*	47,0*	-	-	-	-
13	45,5*	48,7*	45,0*	48,2*	42,6*	45,8*	41,3	44,5*	-	-	-	-
12	43,0	46,2*	42,5	45,7*	40,1	43,3*	38,8	42,0	-	-	-	-
11	40,5	43,7	40,0	43,2	37,6	40,8	36,3	39,5	37,7*	-	37,5*	-
10	38,0	41,2	37,5	40,7	35,1	38,3	33,8	37,0	35,2*	38,4*	35,0*	38,2*
9	35,5	38,7	35,0	38,2	32,6	35,8	31,3	34,5	32,7	35,9*	32,5	35,7*
8	33,0	36,2	32,5	35,7	30,1	33,3	28,8	32,0	30,2	33,4	30,0	33,2
7	30,5	33,7	30,0	33,2	27,6	30,8	26,3	29,5	27,7	30,9	27,5	30,7
6	28,0	31,2	27,5	30,7	25,1	28,3	23,8	27,0	25,2	28,4	25,0	28,2
5	25,5	28,7	25,0	28,2	22,6	25,8	21,3	24,5	22,7	25,9	22,5	25,7
4	23,0	26,2	22,5	25,7	20,1	23,3	18,8	22,0	20,2	23,4	20,0	23,2
3	20,5	23,7	20,0	23,2	17,6	20,8	16,3	19,5	17,7	20,9	17,5	20,7
2	18,0	21,2	17,5	20,7	15,1	18,3	13,8	17,0	15,2	18,4	15,0	18,2
1	15,5	18,7	15,0	18,2	12,6	15,8	11,3	14,5	12,7	15,9	12,5	15,7
0	a) 13,0	b) 16,2	a) 12,5	b) 15,7	a) 10,1	b) 13,3	a) 8,8	b) 12,0	a) 10,2	b) 13,4	a) 10,0	b) 13,2
	m		m		m		m		m		m	

\* Weitere Hubhöhen, Auslegerlängen sowie Klettern im Gebäude auf Anfrage. / Further hoist heights and jib lengths as well as climbing inside the building on request. / Autres hauteurs sous crochet et longueurs de flèche ainsi que hissage dans le bâtiment sur demande. / Ulteriori altezze gancho, lunghezze braccio così come telescopaggio all'interno dell'edificio: su richiesta. / Para alturas bajo gancho superiores, otros alcances y trepado en el interior del edificio, consultar. / Outras alturas de elevação, comprimentos de lança e subida no edifício: sob consulta.

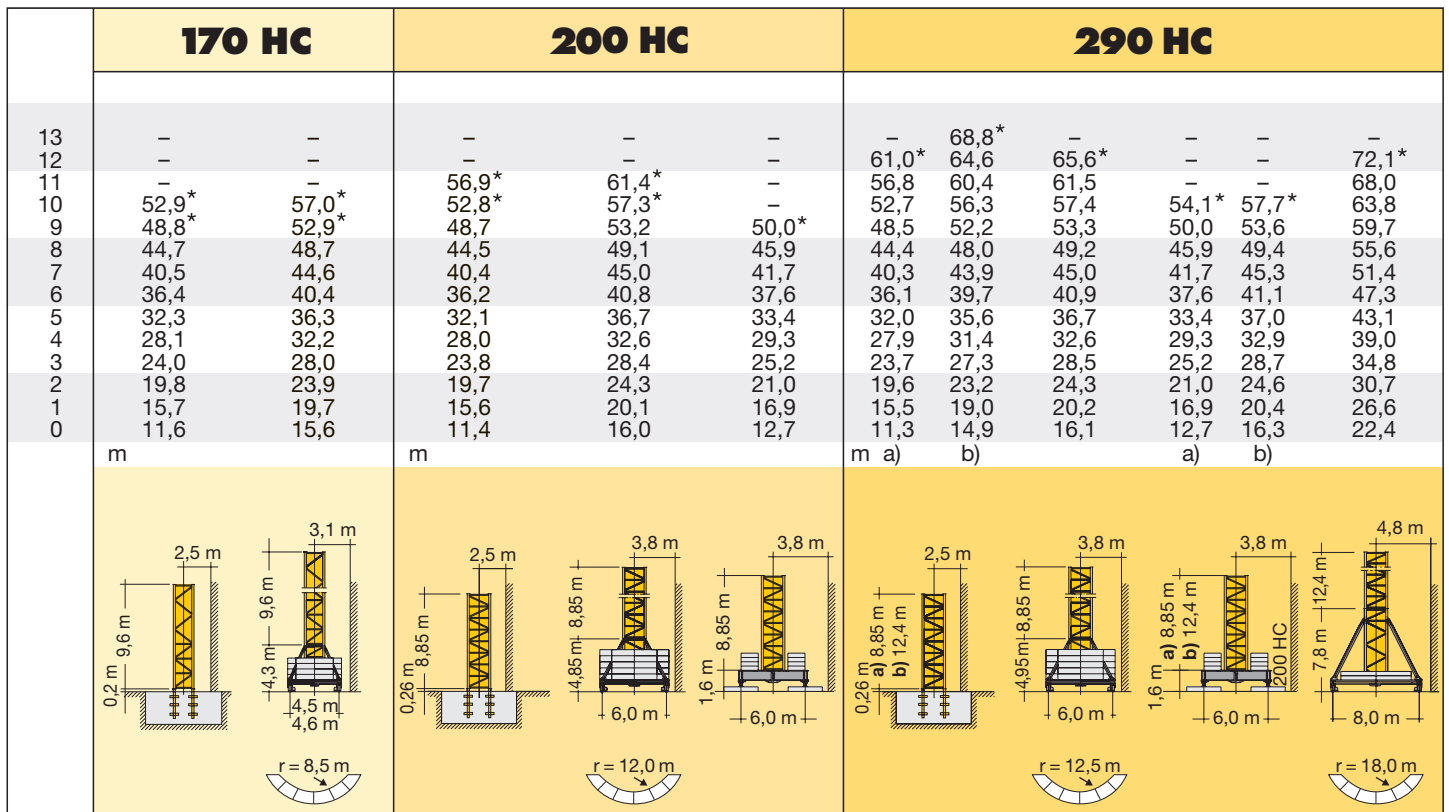
# Ausladung und Tragfähigkeit

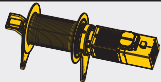
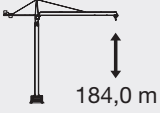

Radius and capacity / Portée et charge / Sbraccio e portata / Alcances y cargas / Alcance e capacidade de carga

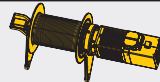
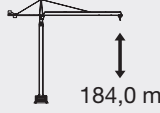



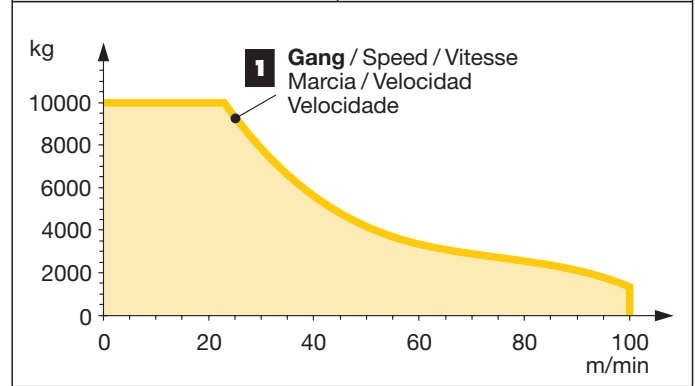
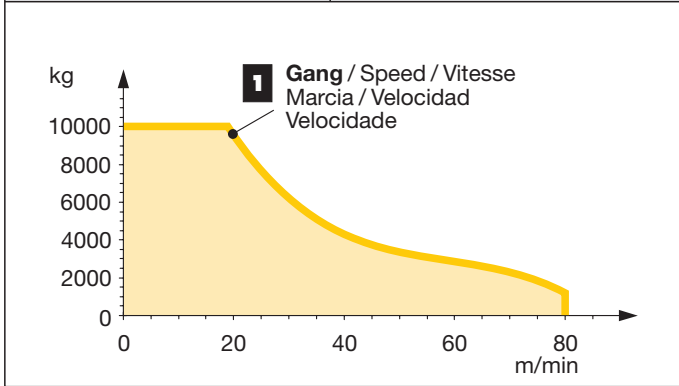
# Hubhöhe

Hoisting height / Hauteur sous crochet / Altezza di sollevamento / Altura bajo gancho / Altura de montagem

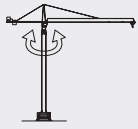
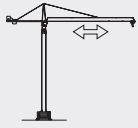
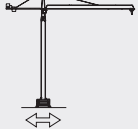



	↔ <b>stufenlos</b> / stepless / régl. continu regl. progressiva / sin escalones / sem degraus kg m/min
37 kW FU WIW 250 MZ 402 6 <b>Lagen</b> Layers Couches Strati Camadas Capas 	 10000 0 ↔ 19 1150 0 ↔ 80
max. 261,0 m**	

	↔ <b>stufenlos</b> / stepless / régl. continu regl. progressiva / sin escalones / sem degraus kg m/min
45 kW FU WIW 260 MZ 401 6 <b>Lagen</b> Layers Couches Strati Camadas Capas 	 10000 0 ↔ 23 1200 0 ↔ 100
max. 261,0 m**	


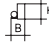

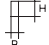

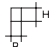
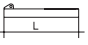

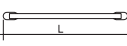

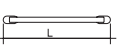

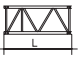
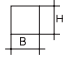


\*\* Weitere Hublastdaten: siehe Betriebsanleitung. / Further hoist load data: see instruction manual. / Autres données de la charge de levage: voir manuel d'instruction. / Altri dati sui carichi sollevati: consultare il manuale d'istruzione. / Alturas bajo grancho superiores según manual. / Outras tabelas de carga: consultar manual de instruções.

	U/min 0 ↔ 0,8 sl./min tr./min	1 x 7,5 kW FU
	0 ↔ 100,0 m/min	5,5 kW FU
	25,0 m/min	2 x 4,0 kW (132 HC) 2 x 7,5 kW (290 HC) 2 x 5,5 kW (200 HC, 170 HC)
	<b>kVA</b>	37 kW FU 45 kW FU 47,0 54,0



Pos. Anz.  
Item Qty.  
Rep. Qté.  
Voçe Qta.  
Pos. Cant.  
Ref. Cant.

				L (m)	B (m)	H (m)	kg*	
<b>Unterwagen</b> <b>Undercarriage / Châssis / Carro della gru</b> <b>Carro con mástil / Carro de guindaste</b>								
19	2	<b>Fahrschemel mit Antrieb</b> / Rail bogie with drive Bogie moteur / Telaio con gruppo propulsore Caja rodillo motriz / Quadro sem grupo de propulsão			132 HC 1,38 170 HC 1,46 200 HC 1,46 290 HC 1,63 (1,46)	0,88 0,84 0,84 0,92 (0,84)	0,87 0,87 0,87 0,95 (0,87)	900 920 920 1690 (920)
20	2	<b>Fahrschemel ohne Antrieb</b> / Rail bogie without drive Bogie fou / Telaio senza gruppo propulsore / Caja rodillo conducido / Quadro com grupo de propulsão			132 HC 1,17 170 HC 1,15 200 HC 1,15 290 HC 1,37 (1,15)	0,60 0,60 0,60 0,62 (0,60)	0,87 0,87 0,87 0,95 (0,87)	860 880 880 1340 (880)
21	1	<b>Tragholm lang</b> / Long support arm Longeron long / Longherone lungo Braço soporte largo / Travessa comprida			132 HC 7,12 170 HC 7,15 200 HC 9,10 290 HC 9,10 (11,95)	0,78 0,80 0,82 0,80 (0,82)	0,65 0,70 0,74 0,80 (0,80)	950 1070 1350 1650 (2200)
22	2	<b>Tragholm kurz</b> / Short support arm Longeron court / Longherone corto Braço soporte corto / Travessa curta			132 HC 3,45 170 HC 3,45 200 HC 4,41 290 HC 4,45 (5,58)	0,56 0,60 0,62 0,77 (0,65)	0,55 0,70 0,71 0,77 (0,77)	408 500 615 800 (1035)
23	2 + 2	<b>Randträger</b> / Border support Traverse / Supporti base Traviesa / Apoio de bordo			132 HC 4,02 170 HC 4,08 - 4,30 200 HC 5,48 - 5,46 290 HC 5,46 - 5,40	0,35 0,16 - 0,33 0,11 - 0,17 0,11 - 0,18	0,12 0,11 - 0,14 0,16 - 0,38 0,16 - 0,38	95 80 - 200 118 - 454 175 - 525 (366 - 912)
24	4	<b>Stützholm</b> / Support strut Hauban de châssis / Correnti di appoggio Tirante vertical / Travessa de apoio			132 HC 3,78 170 HC 3,53 200 HC 4,23 290 HC 4,14 (6,55)	0,15 0,25 0,17 0,18 (0,22)	0,22 0,17 0,25 0,25 (0,25)	200 240 275 320 (600)
25	1	<b>Unterwagen-Turmstück</b> / Undercarriage tower section Mât de châssis / Elemento di torre del carro Tramo de carro / Peça de torre do chassis			132 HC 3,50 170 HC 3,30 200 HC 3,73 290 HC 3,73 (6,70)	2,06 2,15 2,52 2,62 (2,53)	2,06 2,15 2,52 2,62 (2,53)	1320 2000 1950 2550 (3800)
26	1	<b>Stapel Aufstiege und Podeste</b> / Bundle of ladders and platforms Faisceau d'échelles et de plates-formes / Serie di scale e rampe Paquete de escaleras y plataformas / Escadas e patamares			132 HC 3,50	1,20	1,00	1000
27	1	<b>Kiste mit Kleinteilen</b> / Crate with small parts Caisse contenant des accessoires / Cassa con accessori Caja con accesorios / Caixa de acessórios			2,00	1,00	1,00	2000

( ) **Angaben in Klammern gelten für 8 m-Unterwagen.** / The data in brackets are valid for an undercarriage of 8 m. / Les données techniques indiquées entre parenthèses sont valables pour un châssis de 8 m. / Caratteristiche in (..) valgono per carro di 8 m. / Los datos entre paréntesis son válidos para carro de 8 m. Características em (..) válidas pelo chassis de 8 m.

\* **Einzelgewichte.** / Single weights. / Poids individuels. / Pesì di componenti. / Pesos unitarios. / Pesos de peças componentes.

**Konstruktionsänderungen vorbehalten!**  
Subject to alterations! / Sous réserves de modifications!  
Si fa riserva di modifiche! / ¡Sujeto a modificaciones!  
Salvo modificação da construçao!

**Sämtliche Angaben erfolgen ohne Gewähr.** / This information is supplied without liability.  
Ces renseignements sont sans garantie. / Le indicazioni contenute si intendono salvo errori ed omissioni.  
Declinamos toda responsabilidad derivada de la información proporcionada. / Declinamos qualquer  
responsabilidade quanto à informação fornecida.